

Places 1 à 10

1/4

1/2

FINALE

PrM 2 F

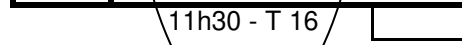
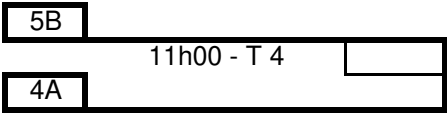
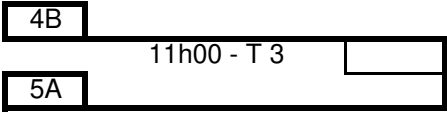
11h00

11h30

13h30

15h15

Places 1 et 2



Places 3 et 4
14h00

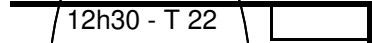
Perdants 11h30 - T 13 et 11h30 - T 14

Perdants 11h30 - T 15 et 11h30 - T 16



Places 5 et 6

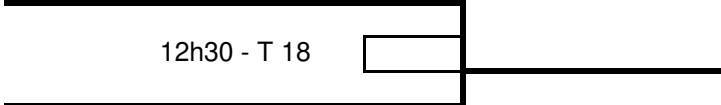
Places 9 et 10
12h30



Places 7 et 8
14h00

Perdant 11h00 - T 3

Perdant 11h00 - T 4



Perdant 12h30 - T 22

Perdant 12h30 - T 21

